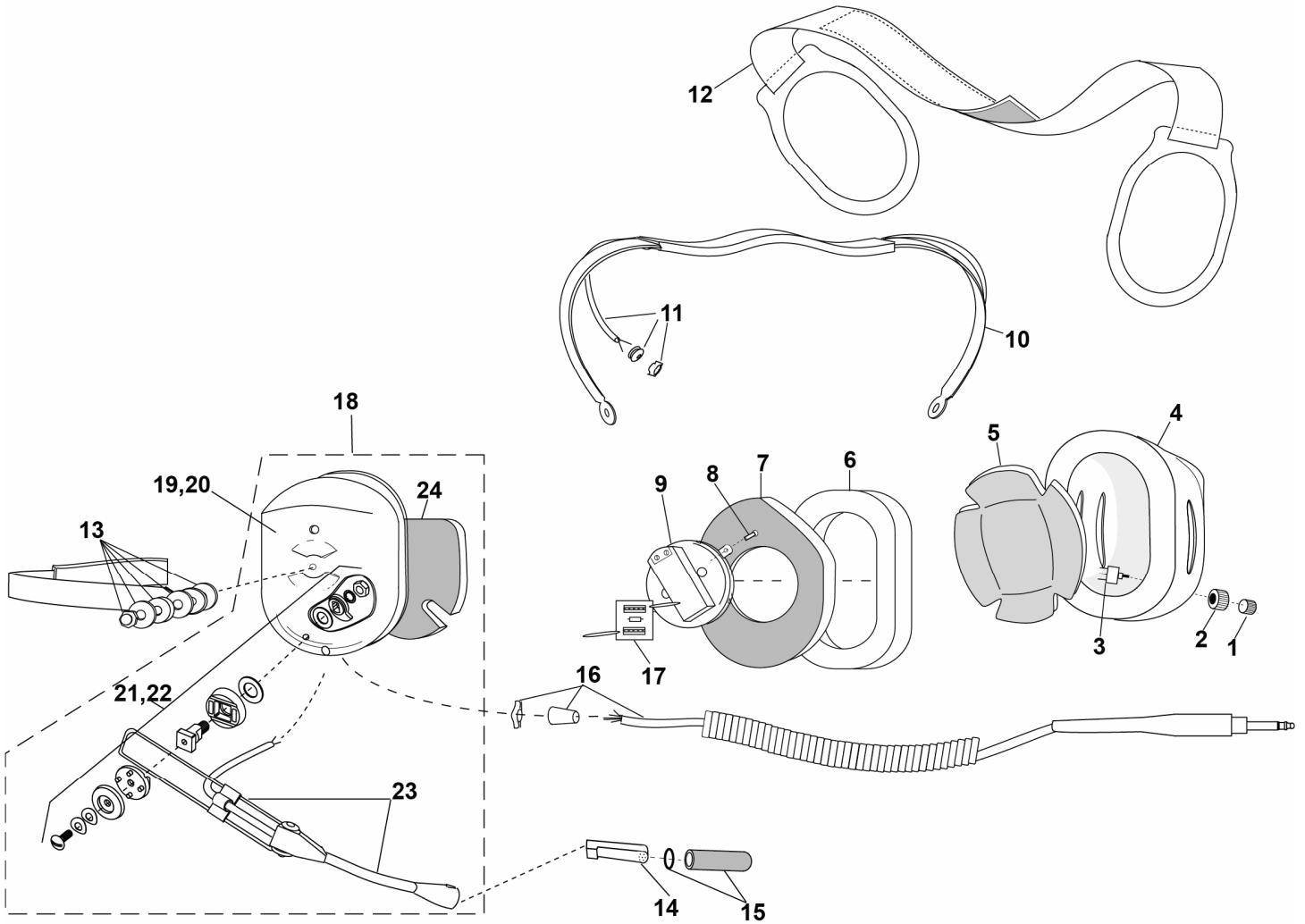


**PARTS LIST
MODEL H3441**


Note: Nondetented Boom shown (20,22)

No.	Description	Part No.
1	Switch Cap Kit	41090G-13
2	Switch Guard	13148P-01
3	Push Button Switch	09851P-17
4	Right Dome	15522P-09
5	Dome Filter (1 each)	24636P-03
6	Undercut Gel Earseal (pair)	40863G-02
7	Filter	25629P-05
8	Screw (10/pk)	00023M-11
9	Earphone Assembly	10376G-17
10	Spring Assembly	10117G-97
11	Overhead Cord Kit	22607G-11
12	Adjustable Strap	10370G-03

No.	Description	Part No.
13	Nut and Washer Kit (10 pk)	12052G-02
14	M-7A Electret Mic	09168P-33
15	Mic Protector w/ O-Ring	40062G-02
16	Communication Cord Assy Kit	18028G-34
17	PCB Assembly	18289G-13
18	Kit, Dome & Mic Boom	40688G-71
19	Left Dome (Detented Boom)	15522P-46
20	Left Dome (Nondetented Boom)	15522P-61
21	Boom Guide Kit (Detented)	12840G-09
22	Boom Guide Kit (Nondetented)	12840G-20
23	Hybrid Boom with Cord	18740G-05
24	Filter	11410P-02

ELECTRICAL SCHEMATIC MODEL H3441

