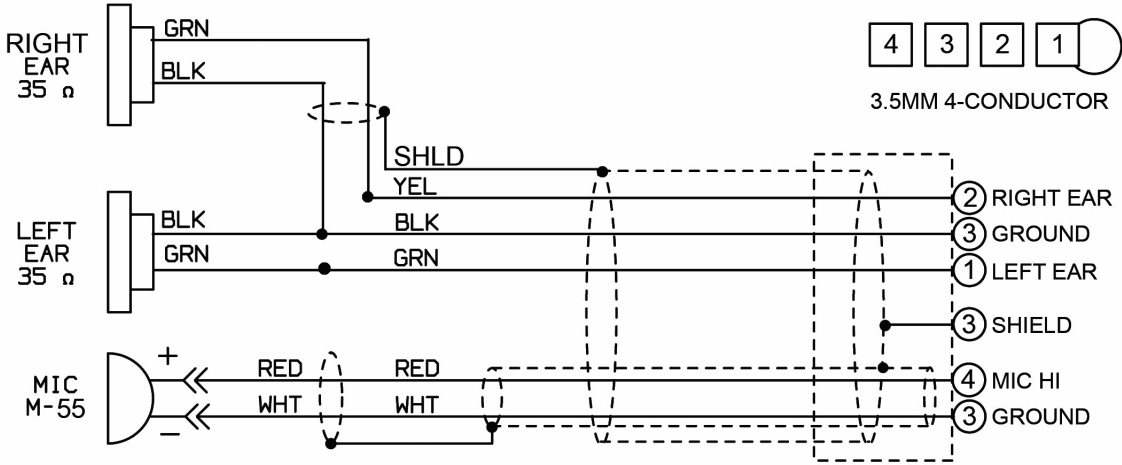


No.	Description	Part No.
1	Adjustable Strap	10370G-03
2	Spring Assembly	10117G-97
3	Dome, Right	15522P-03
4	Dome, Left (mic. side)	15522P-02
5	Overhead Cord	18741G-10
6	Nut and Washer Kit (10 pk)	12052G-02
7	Filter	11410P-02
8	Earphone Assembly	10476G-03
9	Screw/Grommet Kit (4 pk)	18900G-47
10	Filter	25629P-05

No.	Description	Part No.
11	Filter (1 each)	14096P-09
12	Undercut Gel Earseal (pair)	40863G-02
13	Dome Filter (1 each)	15545P-01
14	Comm Cord Kit	41080G-27
15	Boom Attachment Kit	12840G-19
16	Mic Boom Assembly	18740G-34
17	Microphone M-55	09168P-66
18	Mic Protector w/ O-Ring	40062G-02
19	Adapter Cable	55009P-02

ELECTRICAL SCHEMATIC DCX-BTHLC



N/C = NO CONNECTION